



education

DEPARTMENT: EDUCATION
MPUMALANGA PROVINCE

GENERAL EDUCATION AND TRAINING

NATURAL SCIENCES AND TECHNOLOGY

GRADE 5

CONTROLLED TEST

NOVEMBER 2024

SURNAME & NAME	
SCHOOL	
DATE	

MARKS: 40
TIME: 1 HOUR

This question paper consists of 7 pages

INSTRUCTION

1. Answer ALL the questions on this paper.

SECTION A: ENERGY AND CHANGE

QUESTION 1


Choose and circle the letter of the correct answer

- 1.1. For fuel to keep on burning it needs _____ (1)
A. Carbon dioxide
B. Axle
C. Oxygen
D. Cell
- 1.2. Electricity is generated at _____ (1)
A. Gas
B. Fuel
C. Switch
D. Power station
- 1.3. A light bulb changes electrical energy into _____ energy (1)
A. Light
B. Movement
C. Sound
D. Kinetic
- 1.4. To release movement energy from elastic bands you need to _____ it (1)
A. Compress
B. Stretch
C. Beat
D. Moved

(4)

QUESTION 2

Use a tick (✓) to state whether the following statements are **True** or **False**.

No	STATEMENT	TRUE	FALSE
2.1	Wood is a material that can transfer electrical energy		
2.2	Stored energy in cells is chemical energy		
2.3	 This connection will provide light.		
2.4	A catapult stretched elastic system is used to move stones		

(4)

QUESTION 3

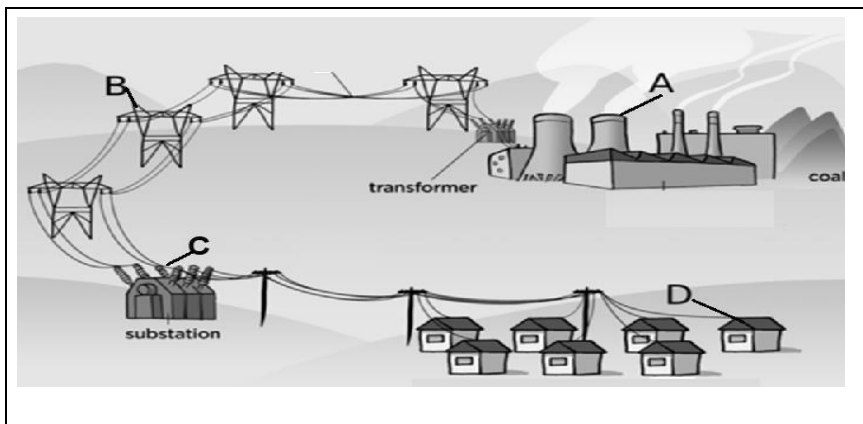
Match the statements in Column A with the word(s) in Column B. Write only the letter of the correct answer in the answer column.

NO	Column A	Column B	Answer
3.1	Energy obtained from fuel, for example heat and light.	A. Power lines	
3.2	To load energy into a spring you must ____.	B. Circuit	
3.3	Large steel tower-like structure supporting electrical cables.	C. Output energy	
3.4	A pathway that allows electricity to flow or a system that allows electrical energy to move	D. Compress	
		E. Stretch	

(4)

QUESTION 4

Study the picture about mains electricity answer the questions that follow:



4.1. Give labels for A, B, and D (3)

- A. _____
- B. _____
- C. _____

4.2. What is the function of the Substation in C (1)

Look at the picture and answer questions:



4.3. What danger can happen in the picture? (1)

4.4. Mention 1 safety tip we can use prevent the danger above? (1)

(6)

QUESTION 5

5.1. Look at the following picture and answer the questions that follow:



5.1.1. Name the input energy from the picture above. (1)

5.1.2. What wrong is the man doing. Give a reason for your answer. (2)

5.1.3. Name any 1 other fuel that you know . (1)

5.2. We can make things move using stretched or twisted

5.2.1. _____ and 5.2.2. _____ springs. (2)

(6)

TOTAL SECTION A: 24

SECTION B: PLANET EARTH AND BEYOND

QUESTION 6

- 6.1. Limestone is a sedimentary rock that is made from _____ (1)
A. Sand
B. Rock
C. Clay
D. Shells
- 6.2. The remains of plants and animals preserved in sedimentary. (1)
A. Coelacanth fish
B. Fossils
C. Soil
D. Earth
- (2)

QUESTION 7

Use a tick (✓) to state whether the following statements are **True** or **False**.

No	STATEMENT	TRUE	FALSE
7.1.	Clay soil holds more water.		
7.2.	Petrol support all life on Earth.		

(2)

QUESTION 8

Match the statements in Column A with the word(s) in Column B. Write only the letter of the correct answer in the answer column.

NO	Column A	Column B	Answer
8.1	Surface of the Earth	A. Cradle of Humankind	
8.2	The South African heritage site	B. Deposition	
8.3	How sedimentary rocks form	C. Planet	
		D. Crust	

(3)

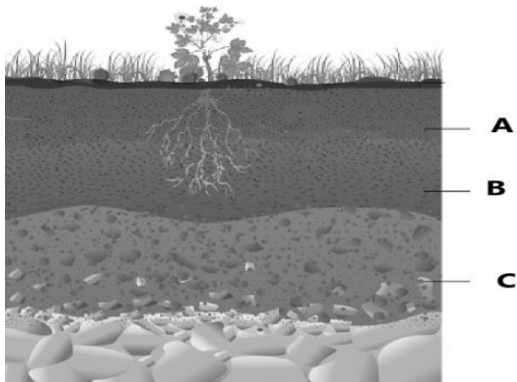
QUESTION 9

- 9.1. Study the picture of the Earth and answer the questions that follow.



- 9.1.1. The Earth is covered with _____ and _____ (2)

9.2. Study the picture of the layers of the soil and answer the questions that follow:



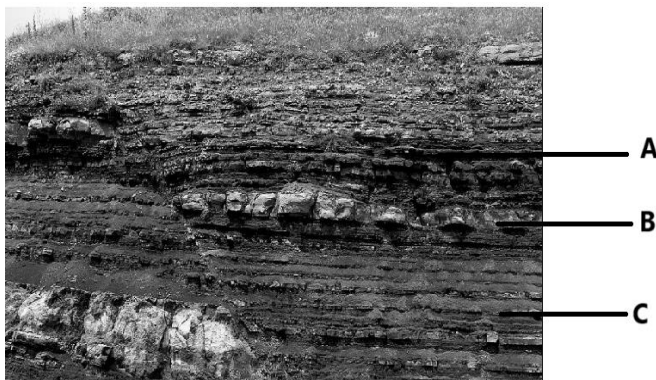
9.2.1. The soil layer where plants grow is _____ (1)

9.2.2. The layer of soil below the topsoil is _____ (1)

(4)

QUESTION 10

This picture is about sedimentary rocks. Answer the questions that follow:



10.1. Which layer is the oldest and which one is the newest. (2)

Oldest _____

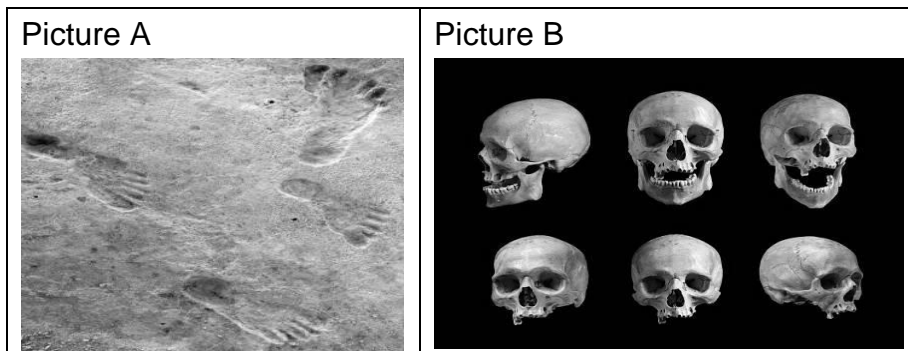
Newest _____

10.2. Give a reason for your answer. (1)

(3)

QUESTION 11

Look at the following pictures and **answer** the questions based on body fossils.



11.1. Which of the pictures above represents **Body** or **Trace** Fossil? (2)

Picture A: _____

Picture B: _____

(2)

TOTAL SECTION B: 16

TOTAL MARKS:40